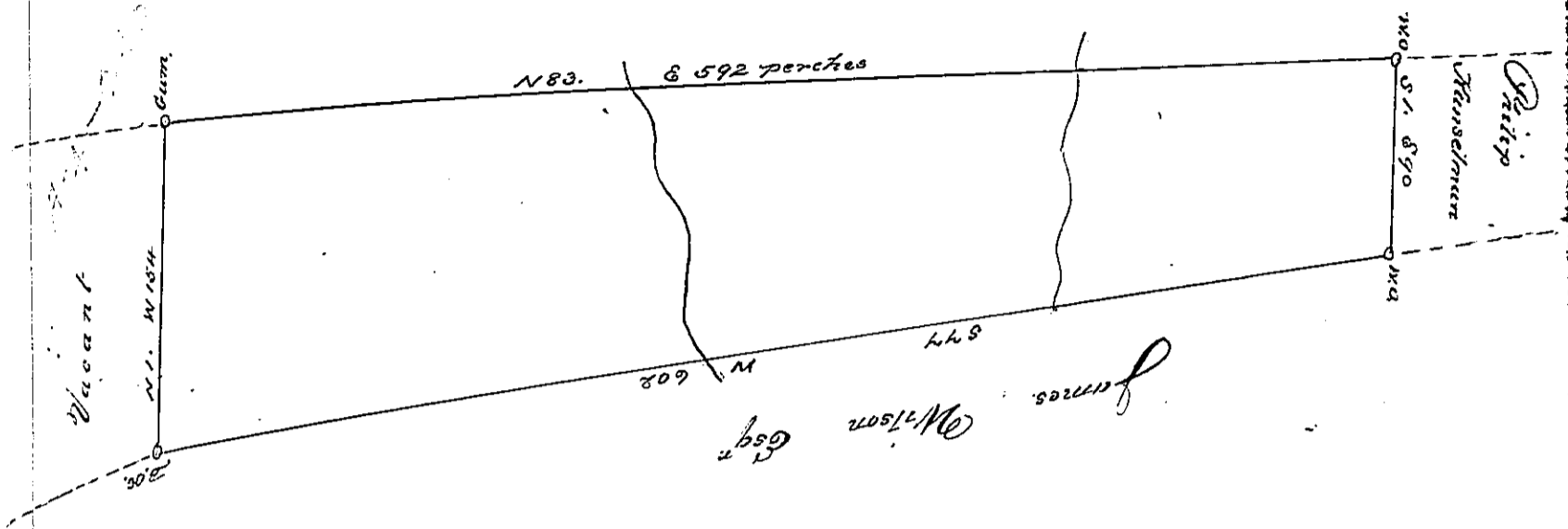


Samuel Flower.



In pursuance of a Warrant dated the 11<sup>th</sup> day of August 1794. Surveyed the 22<sup>d</sup> day of October 1795 unto Charles Gilchrist the above Described Tract of Land. Situate in Pinegrove Township in the County of Berks. Containing 423<sup>ac</sup> 96 perches and the allowance of six per Cent for Roads &c.

Wm. Wheeler D. Just.

Ed. Saul. Bridhead Esq<sup>r</sup>  
Sur. Genl. of Penna<sup>la</sup>

IN TESTIMONY that the above is a copy of the original remaining on file in the Department of Internal Affairs of Pennsylvania, made conformably to an Act of Assembly approved the 16th day of February, 1833, I have hereunto set my Hand and caused the Seal of said Department to be affixed at Harrisburg, this

Ninth day of April 1891  
 Tho<sup>s</sup> Stewart  
 Secretary of Internal Affairs